



# SECURI-WALL STRUCTURES





# MINI FACTORIES

- Typically 10m x 24.7m (247m<sup>2</sup> footprint) with a 72m<sup>2</sup> mezzanine, thus, 319m<sup>2</sup> usable space.
- The design allows for a 4.2m high roll-up door and 4m high concrete perimeter wall
- Windows and ventilation can be incorporated per clients requirements.





# AGRICULTURAL UNITS



- Typically this unit is 10m x 18.2m (182m<sup>2</sup> footprint) and can easily increase to 10 x 20m (200m<sup>2</sup> footprint).
- This unit also uses 4m high walls.
- The roller shutter door will typically be a 4m x 4m door, but a custom door can be fitted to client requirements.





# GARAGE UNITS

- Typical dimensions are 7 x 10m (70m<sup>2</sup> footprint) which can easily be increased to 8 x 11m (88m<sup>2</sup> footprint)
- Walls are typically 3m high and can be increased to 4m high to suit customers requirements.
- Two 3m x 3m garage doors are included and a pedestrian side door can be included if required.



# AIRPLANE HANGARS

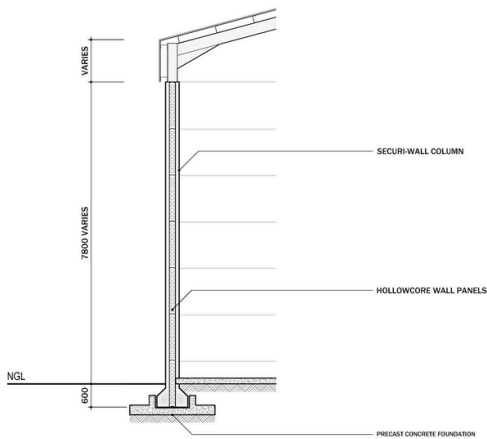
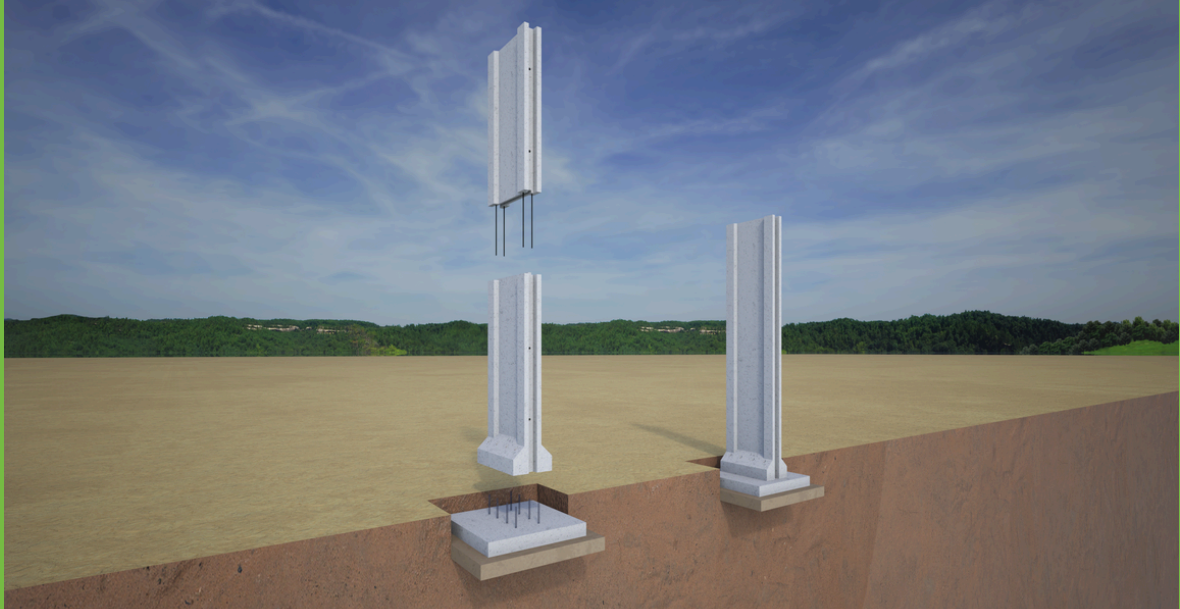


A combination of high-strength precast concrete & steel roof trusses is used:

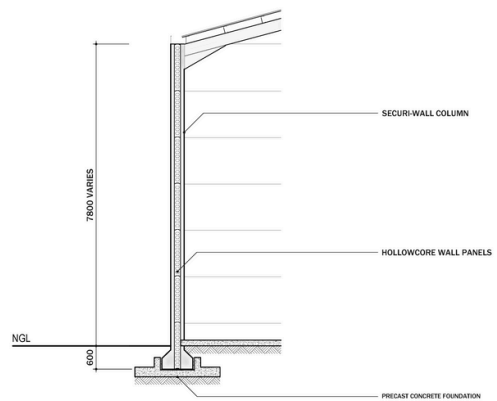
- 150mm thick 50MPa concrete wall panels up to 8.5m long.
- 150mm thick 40MPa concrete columns up to 6m tall.
- Precast concrete foundations.
- Steel roof structure & IBR roof sheets to the client's specification.
- Roller shutter, tilt up or sliding steel doors can be installed.



# COLUMN SECTIONS



**TYPICAL SECTION - FACTORY WALLING**  
WITH TOP-FIXED ROOF STRUCTURE



**TYPICAL SECTION - FACTORY WALLING**  
WITH SIDE-FIXED ROOF STRUCTURE



# WHO WE ARE

High-end security walls have been available for several years, but the concept and design of the walls have evolved. Our clients have requested a solution that is lightning fast.



## ABOUT US

SECURI-WALL is a patented product of the Echo Group of companies, available Nationally.

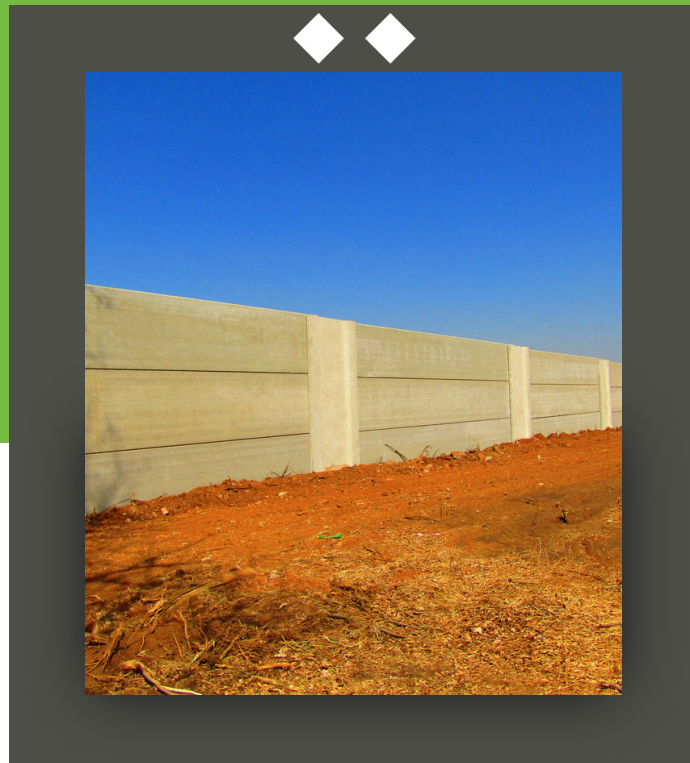
## WE AIM TO PROTECT!

SECURI-WALL is a patented column design that can be used for both high strength perimeter walling as well as erecting commercial and industrial building structures. Our perimeter walling is ideally suited to protect any high value business or property such as cell phone towers, solar farms, diesel depots, distribution centres, electrical substations, mining operations and any property in a high-risk area close to an informal settlement or next to a railway line or highway.

SECURI-WALL is an effective alternative building solution for Industrial Structures that would typically be built using a steel frame construction with infill brickwork or steel sheeting such as warehouses, factories, distribution centres, storage units, aircraft hangars and agricultural stores. All slabs and columns are manufactured to the highest quality standards and concrete strengths giving our walls and columns a minimum life span of 75+ years and easily achieves a 2-hour fire rating.



# WANT TO LEARN MORE?



@securiwall



@securi-wall

**SECURI-WALL safeguards all that matters to you AND MORE.  
We are fast, reliable and we care about all your walling needs.**

To learn more about us and to see how we can work together,  
email us or give us a call and visit our website.

**SECURI-WALL.CO.ZA**

**EMAIL US**

Gauteng & KZN:  
**neil@securi-wall.co.za**

Western Cape:  
**ahmed@securi-wall.co.za**

**GIVE US A CALL**

Gauteng: **011 668 1900** Neil

KZN: **083 601 7284** Sara

Western Cape: **078 555 1515** Ahmed

**071 305 3115** Brigitte