



SECURI-WALL



THE ULTIMATE PERIMETER BARRIER

We can install up to 450 linear meters per week!

A Patented Walling and Column System

WHY US?

LIGHTNING FAST

We can deliver and install up to 450 linear meters of perimeter walling per week, making SECURI-WALL the fastest available walling solution on the market. All our precast concrete panels and columns are manufactured in a controlled factory environment ensuring precise accuracy ready to be efficiently installed by our expert team.




FORMIDDABLE PROTECTION

SECURI-WALL is designed to comply with South African National Standards and design code SANS 10160-3 : 2011, which ensures that our column and wall panels are produced to a high-quality standard with each product engineer-designed and manufactured site specific to satisfy the client's expectation for security on their premises.

All columns have a minimum concrete compressive strength of 40Mpa and are reinforced according to our engineer's design.





Our 150mm thick hollow-core concrete panels are manufactured to a minimum 50Mpa concrete compressive strength and are reinforced with two layers of 1700+Mpa prestressed wire.

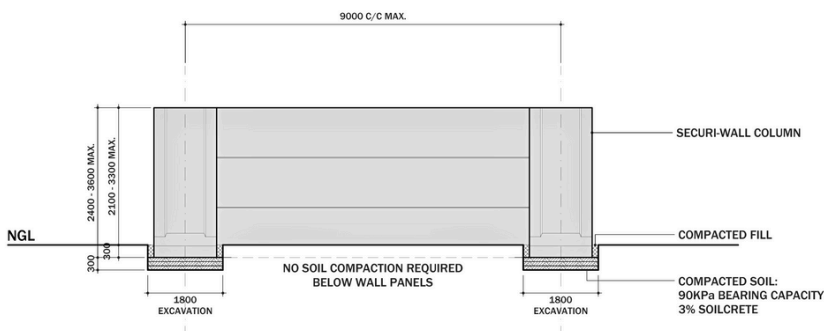
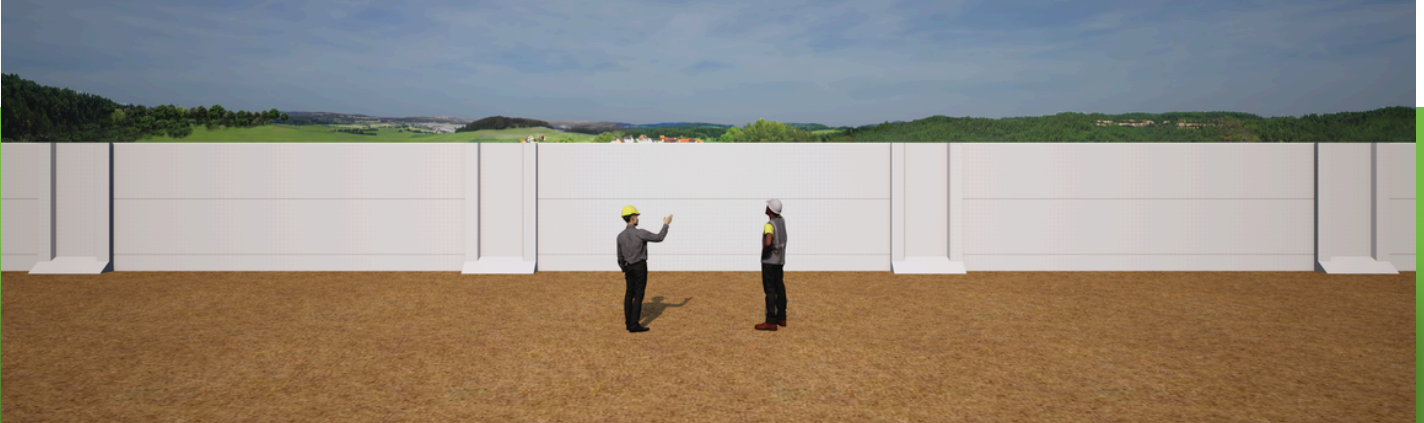
WALLING



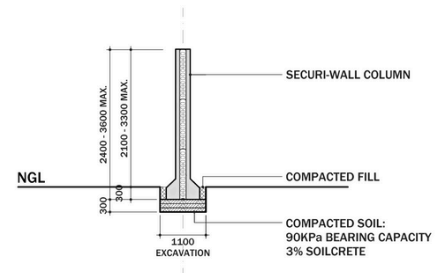
- The SECURI-WALL columns are 1500mm wide and includes a concrete foundation of 1500 x 800mm.
- They are manufactured in standard lengths from 2.4m up to 3.6m high, with heights of up to 6.6m achievable at request.
- Columns can be spaced at 8m to 9m apart, thus at 9m centres.



WALLING SECTIONS



TYPICAL ELEVATION - BOUNDARY WALLING



TYPICAL SECTION - BOUNDARY WALLING

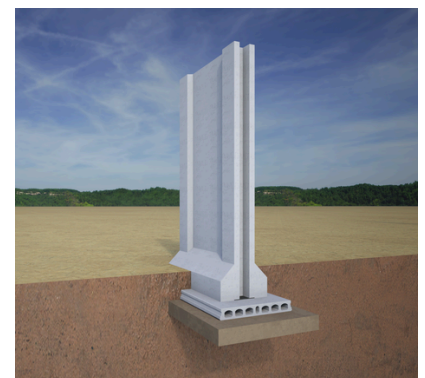
TECHNICAL DESIGN DETAILS:

Securi-Wall is a walling system comprising of 1500mm wide concrete columns, with an integrated 1500x800mm wide concrete foundation footing, and 150mm thick slip-formed hollow core concrete panels.

Columns are spaced at 8.0m to 9.0m centres and receive the hollow core panels in locating grooves that extend vertically on either side of the columns.

Panels are reinforced with 8 top and 8 bottom wires.

Self Weight	3700 kg
Column Centres	9000 mm
Overturning Moment	46.72kN.m
Restoring Moment	49.37kN.m



WHO WE ARE

High-end security walls have been available for several years, but the concept and design of the walls have evolved. Our clients have requested a solution that is lightning fast.



ABOUT US

SECURI-WALL is a patented product of the Echo Group of companies, available Nationally.

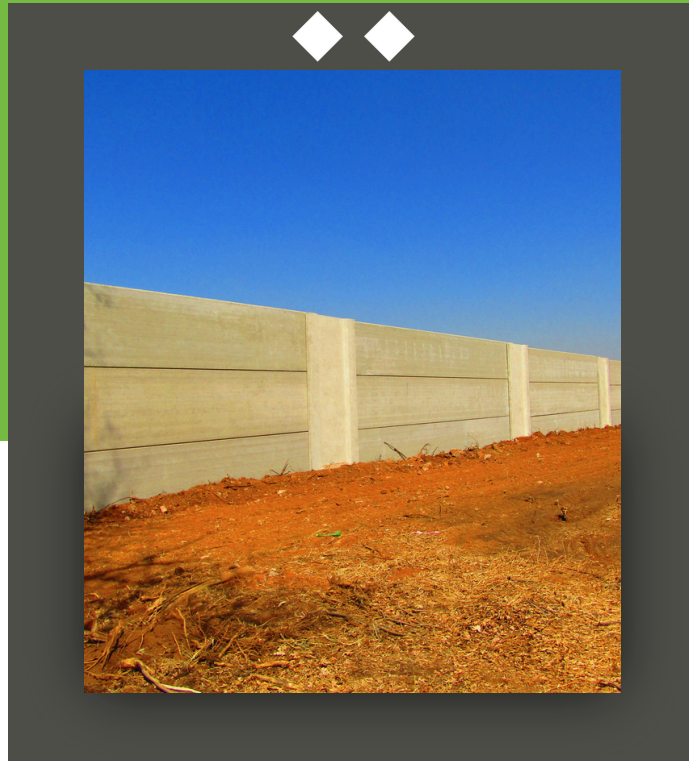
WE AIM TO PROTECT!

SECURI-WALL is a patented column design that can be used for both high strength perimeter walling as well as erecting commercial and industrial building structures. Our perimeter walling is ideally suited to protect any high value business or property such as cell phone towers, solar farms, diesel depots, distribution centres, electrical substations, mining operations and any property in a high-risk area close to an informal settlement or next to a railway line or highway.

SECURI-WALL is an effective alternative building solution for Industrial Structures that would typically be built using a steel frame construction with infill brickwork or steel sheeting such as warehouses, factories, distribution centres, storage units, aircraft hangars and agricultural stores. All slabs and columns are manufactured to the highest quality standards and concrete strengths giving our walls and columns a minimum life span of 75+ years and easily achieves a 2-hour fire rating.



WANT TO LEARN MORE?



@securiwall



@securi-wall

**SECURI-WALL safeguards all that matters to you AND MORE.
We are fast, reliable and we care about all your walling needs.**

To learn more about us and to see how we can work together,
email us or give us a call and visit our website.

SECURI-WALL.CO.ZA

EMAIL US

Gauteng & KZN:
neil@securi-wall.co.za

Western Cape:
ahmed@securi-wall.co.za

GIVE US A CALL

Gauteng: **011 668 1900** Neil

KZN: **083 601 7284** Sara

Western Cape: **078 555 1515** Ahmed

Cape: **071 305 3115** Brigitte